

### INTRODUCTION

There are two versions of the Memcom, both designed for easy installation.

- COP Car Operating Panel – Inside the Lift Car; 24v DC or 90-230v AC
- TOC Top of the Lift Car; 24v DC or 90-230v AC

### INSTALLATION

#### COP Car Operating Panel

Install the Memcom COP to the back of the lift control panel this should have been prepared in advance. Connect the telephone line, the lift alarm push button and any required Memcom Multi Point Station as per the wiring diagrams Fig 1, 2 & 3. The Memcom has built-in LEDs for green & yellow pictograms, microphone & speaker; however a range of accessories and features can also be added if required. Always connect the earth first before applying 90-230v AC or the 24v DC.

#### TOC – Top Of Car

Install the Memcom TOC to the top of the lift car where it is unlikely to be stood on. Connect the telephone line, the lift alarm push button and any required Memcom Multi Point Station as per the wiring diagrams Fig 1, 2 & 3. The Memcom TOC microphone & 4m cable will need installing to the COP or to a high position in the car, such as in a false ceiling, lighting diffuser or air vent. It may be necessary to test the optimum microphone location. The built-in speaker is powerful and will be audible in the lift car; however a range of accessories and features can also be added if required. Always connect the earth first before applying 90-230v AC or the 24v DC.

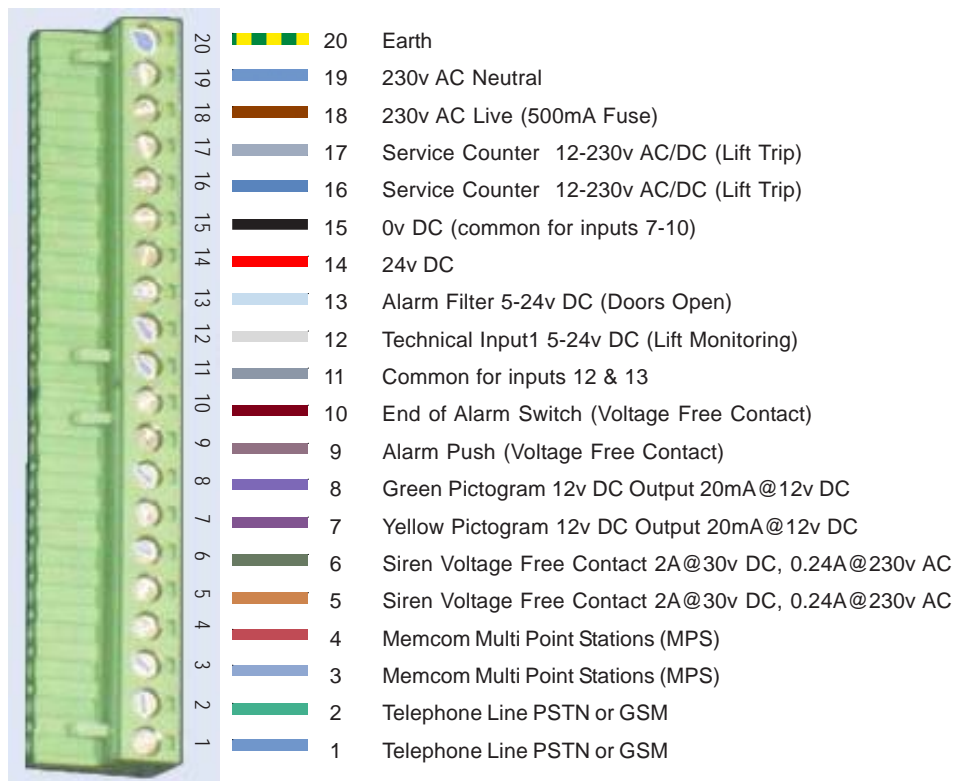


Fig 1. Terminal Connection Block

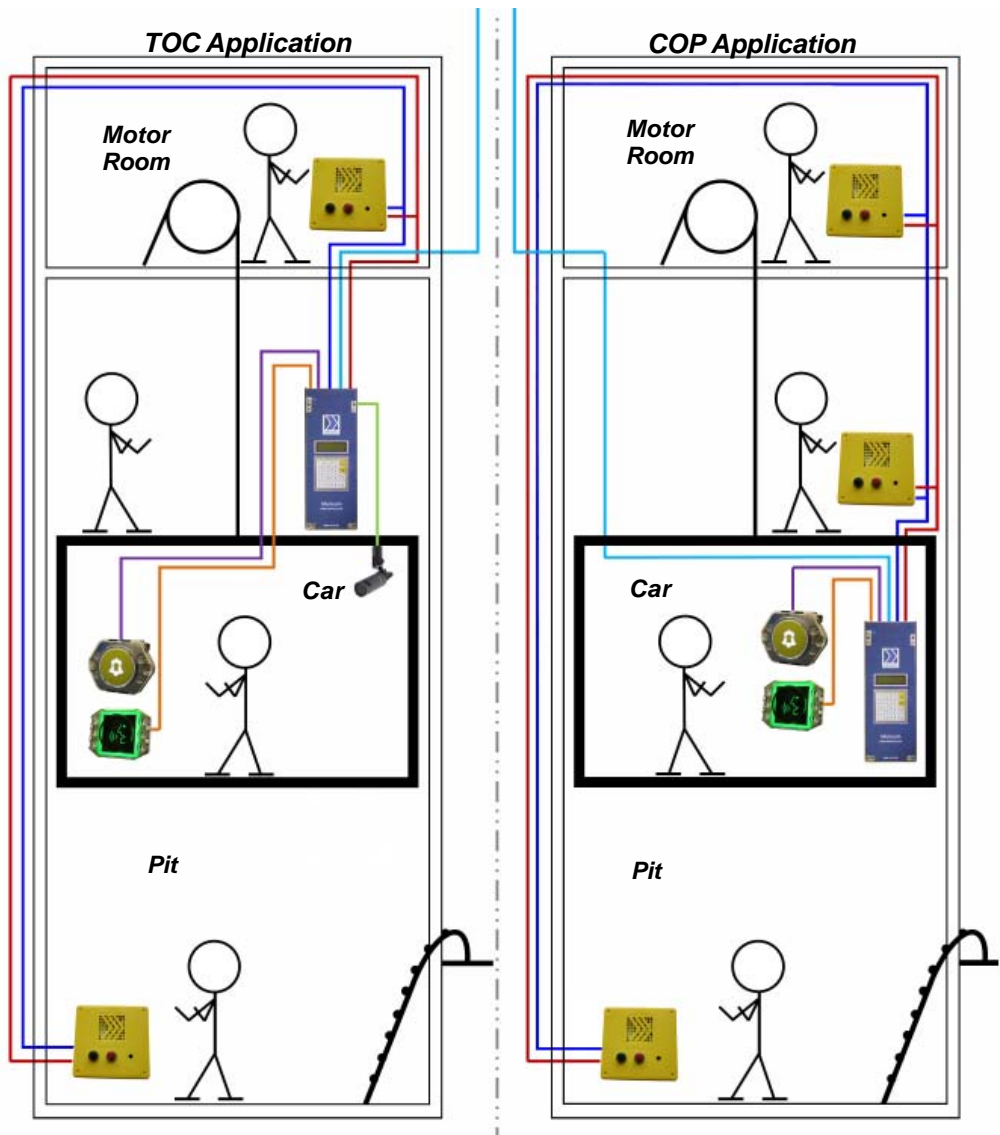
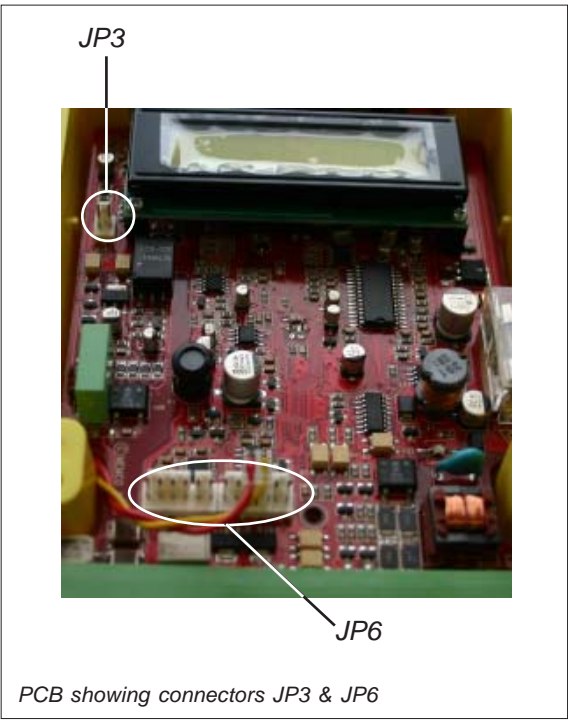


Fig 2: Lift & Shaft Wiring Diagram

**Accessory Connector**

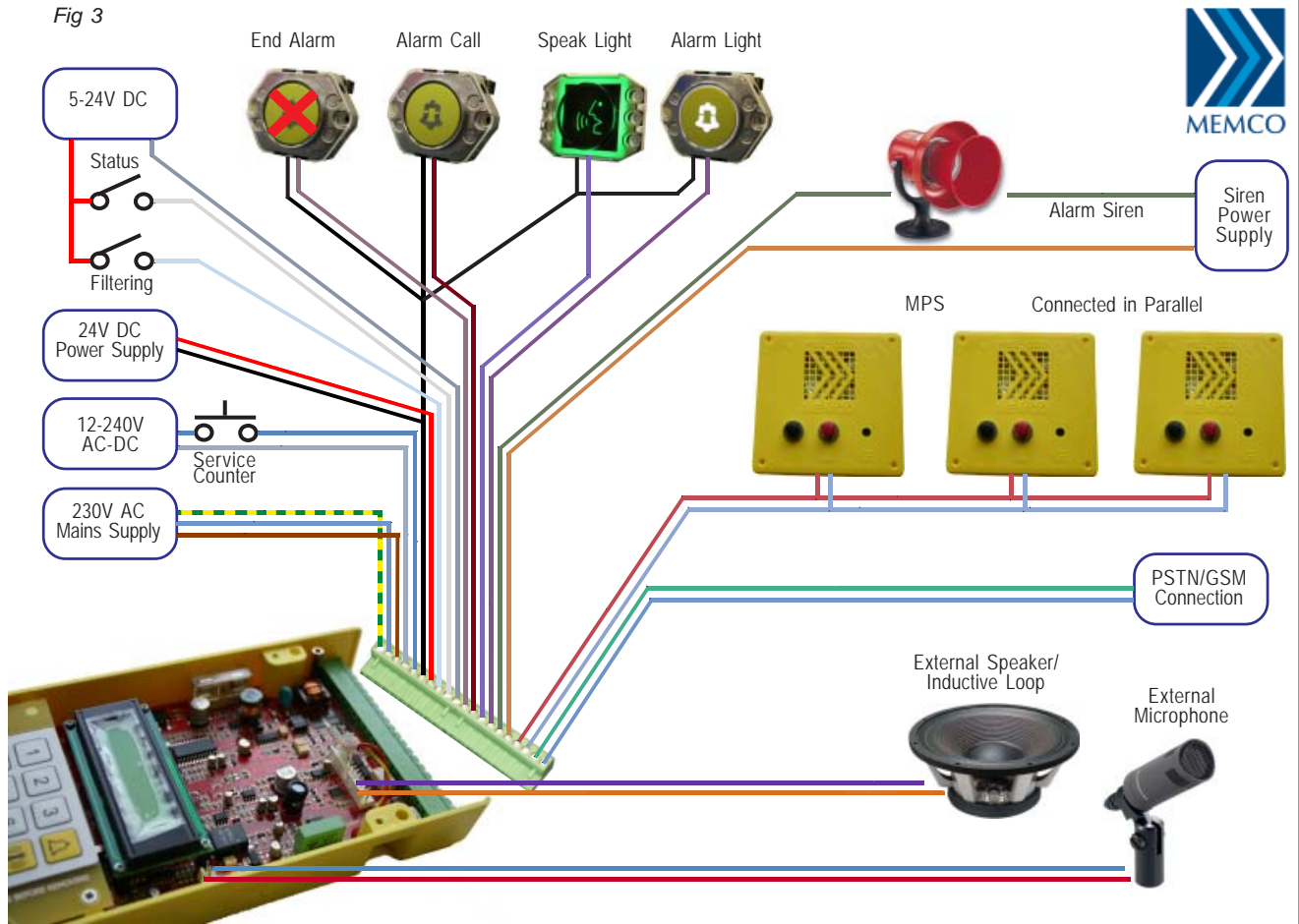
JP6	Function
1	Memcom Inductive loop +
2	Memcom Inductive loop -
3	External speaker +4-32 Ohm
4	External speaker -4-32 Ohm
5	
6	
7	
8	
9	GSM 0v DC
10	
11	
12	GSM +12v DC
JP3	Function
1	External microphone +
2	External microphone -



PCB showing connectors JP3 & JP6

## Memcom Connection Diagram

Fig 3



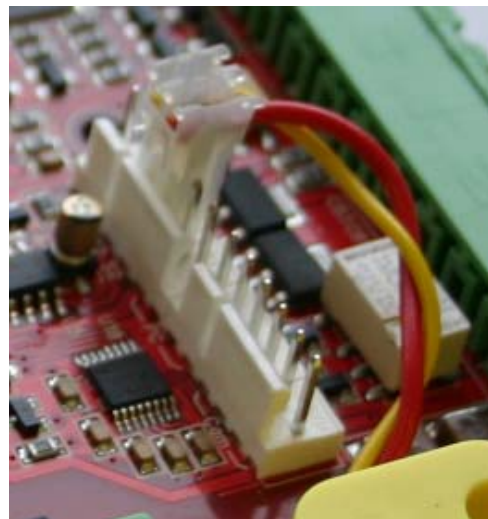
### Inductive Loop: For the hard of hearing

Remove the cover of the Memcom by unscrewing the 4 retaining screws and earth screw if fitted; please ensure the power has been disconnected. The Inductive Loop consists of an amplifier and IL cable which is normally installed behind the COP. The wire is formed into 3 loops which is the optimum for signal strength generation. The Inductive loop is plugged into the Pins 1 and 2 of the accessory header inside the Memcom (see Fig 3).

### Networking

The Memcom has been designed to allow up to a maximum of 8 Memcoms connected to one line without using additional hardware. Each individual Memcom is programmed with an extension number to allow remote access.

Photo JP6 Memcom Accessory Header



## Connect Power to the Memcom

The display should illuminate and display Memco Lift Alarm

After applying 24/240VAC power:-

- If no EN81-28 test call number (\*16) is programmed – a test call will not be made.
- If an EN81-28 test call number (\*16) is programmed and the battery is good – a test call will not be made.
- If an EN81-28 test call number (\*16) is programmed and the battery is low (it may have been running on battery after a power cut which then flattened the battery) – a test call is made.

## General Operation

- To enter programming mode press \* then the password (default is 1234) followed by the # key. The display shows: “Use \* Cmds or ▲▼ Keypad” once the correct password is entered.
- Use the ▲ & ▼ arrows to navigate the menu structure.
- To program a new value, type in the new information and press the # key to confirm.
- To delete a value enter \*#. This is applicable to all programmable parameters.
- To go directly to a programming screen without the arrow keys press the \* (star) followed by the short cut e.g. 22 for programming the Password.
- The shortcut numbers are displayed on each screen. To go back to the top of the menu screens press #. If you have modified a command press # first to save the parameters and then a second # to return to the main menu.
- To abort a call press and hold the # key for 4 seconds and the call will be aborted
- To switch off & prevent a flat battery when power is disconnected, (Display will flash” Power turned off”) the Memcom will sound a series of beeps, then turn off, to turn on re-apply power.
- Alarm calls are inhibited in programming mode.
- When dialling a Memcom remotely via a telephone, dial number, after the Memcom has answered, press # to talk and \*# to end.
- When programming remotely via a telephone, dial number, after the Memcom has answered, press \* password (1234 Default) # to enter programme mode.
- When programming remotely via a telephone, currently programmed telephoned numbers can be checked, follow procedure above to enter programme mode and simply press \*11#, for example, and telephone alarm number 1 will be audibly read back.

## Programming Menu Structure

Alarm Nos	Options	Call Delays	Messages
11 1st Alarm No.	21 ID Code 9 digits	31 In Car Delay	41 Location
12 2nd Alarm No.	22 Password 6 digits	32 Answer Delay	42 Reassurance
13 3rd Alarm No.	23 Volume 0-9	33 MPS Delay	43 Guidance
14 4th Alarm No.	24 Set Time	34 TOC Delay	1 Play
15 Tech Alarm No.	25 Set Date	35 Tech 1 Delay	2 Record
16 EN81-28 Test Call Alarm No.	26 Hardware Opt	36 Tech 2 Delay	3 Unlock/Lock
17 Dial Attempts 1-9	27 Hardware Monitor	37 Test Call Time	
	28 Extension Number		
	29 GMT offset		
<b>Service Counter</b>	<b>Software</b>	<b>Exits</b>	
51 Serv. Interval	91 SW/HW Version	01 Exit without test call	
52 Service Count (Write)	92 Service Count (Read)	02 Exit with test call 1st alarm number	
	93 Service Due	03 Exit with test call 6th alarm number	
	94 Total Trips		(EN81-28 test call)

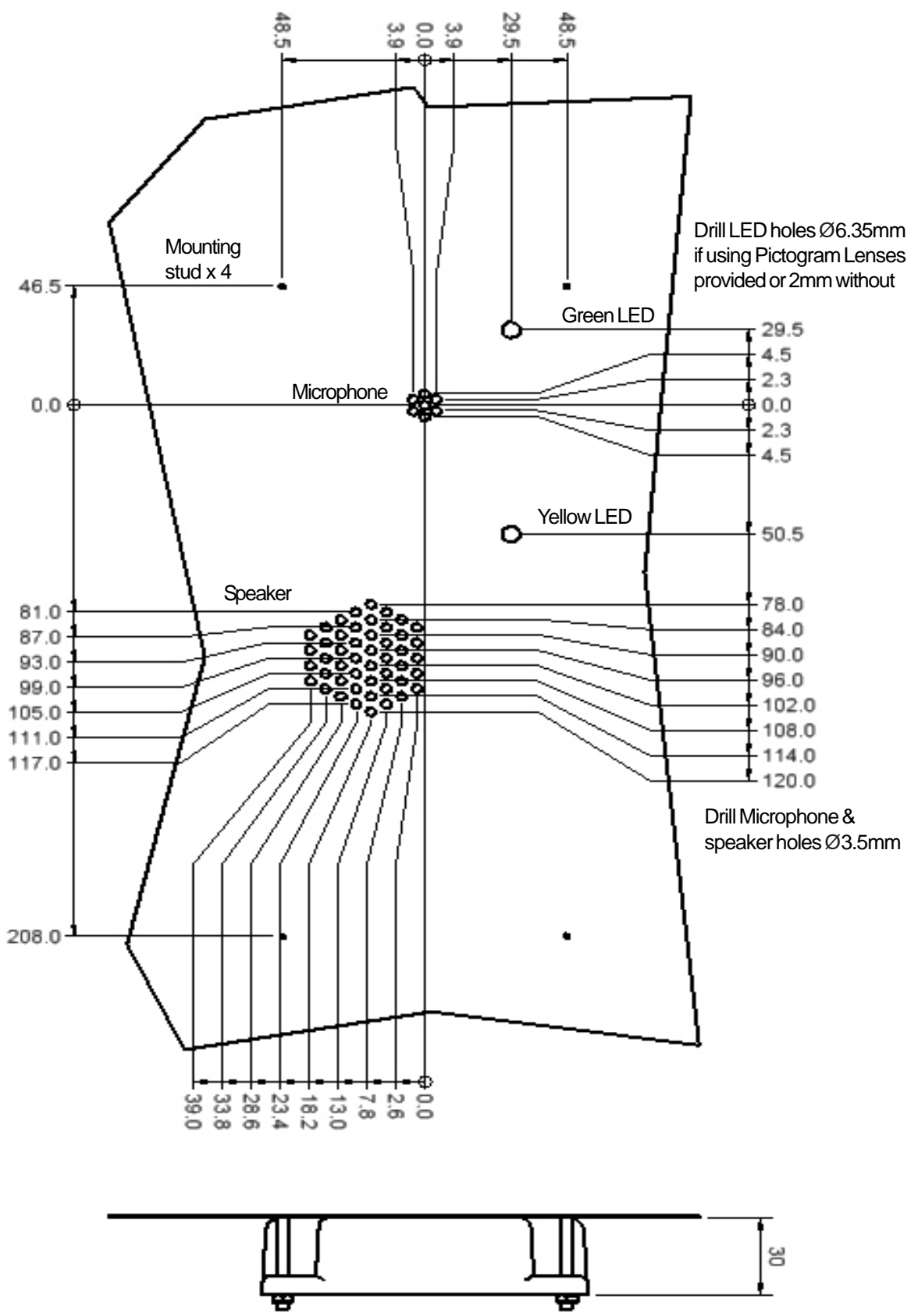


Fig 4: Memcom Fixing Diagrams

## Keypad Quick Programming

**Remember when programming, always use # to confirm a change followed by another # to return to the menu.**

There are 3 programming options for the type of Memcom Alarm Call.

- (Telephone Number)# = Confirmation. The call receiver must push # to speak, or 3 for location message.
- (Telephone Number)\*\*0# = No Confirmation. No message guiding call receiver, no push required, 3 for location.
- (Telephone Number)\*\*1# = Memcom ETR Software. The call receiver has PC Software for easy call handling.

There are 6 different programmable Alarm numbers.

- Nos 1 to 4 Telephone numbers to receive alarm calls, Confirmation or No-Confirmation any mix.
- No 5 Technical alarms for monitoring battery, speaker and microphone defects.
- No 6 EN81-28 test call number 3Day check call to ensure the Memcom is working.

Password >on the keypad press the \* key. -enter the Memcom default code 1234 followed by #;

This will allow access to program mode. Use the \* Cmds or ▲ & ▼ on keypad to navigate the menu structure.

### (A) Confirmation Calls- Operator Receives Recorded Message

Press	Name	Function	
*11	1 <sup>st</sup> (telephone alarm number) #	Program 1 <sup>st</sup> number	
*12	2 <sup>nd</sup> (telephone alarm number) #	Program 2 <sup>nd</sup> number	
*13	3 <sup>rd</sup> (telephone alarm number) #	Program 3 <sup>rd</sup> number	
*14	4 <sup>th</sup> (telephone alarm number) #	Program 4 <sup>th</sup> number	
*15	5 <sup>th</sup> (telephone alarm number) **1#	Program 5 <sup>th</sup> number Technical Alarm	
*16	6 <sup>th</sup> (telephone alarm number) **1#	Program 6 <sup>th</sup> number EN81-28 Test Call	
Press	Name	Default	Function
*23	Volume	TOC 5, COP 0	Adjustable between 0-9 (0 = minimum setting)
*31	In-Car delay	005	Adjustable between 1-10 seconds (0=disabled)
*33	MPS delay	001	Adjustable between 1-10 seconds (0=disabled)
*34	Top of Car delay	001	Adjustable between 1-10 seconds (0=disabled)
*41	<b>Location message Recommended</b>	Blank	<b>1: Play Location 2: Record Location Message 3: Unlock/Lock Message</b>
*01#	Exit program		Exit program without making an alarm call
*02#	Exit program		Exit programming and make test alarm
*03#	Exit program		Exit programming and call Alarm number 6 EN81-28
*021#	Exit program		Exit programming and call Alarm number 1 only
*022#	Exit program		Exit programming and call Alarm number 2 only
*023#	Exit program		Exit programming and call Alarm number 3 only
*024#	Exit program		Exit programming and call Alarm number 4 only
*035#	Exit program		Exit programming and call Alarm Number 5 Technical Alarm

### (B) Non confirmation Calls-No Recorded Message for the Operator

Press	Name	Function
*11	1 <sup>st</sup> (telephone alarm number) **0#	Program 1 <sup>st</sup> number
*12	2 <sup>nd</sup> (telephone alarm number) **0#	Program 2 <sup>nd</sup> number
*13	3 <sup>rd</sup> (telephone alarm number) **0#	Program 3 <sup>rd</sup> number
*14	4 <sup>th</sup> (telephone alarm number) **0#	Program 4 <sup>th</sup> number

### Advance Settings

Press	Name	Default	Function
*21	ID code	Serial No.	A unique 9-digit ID (Serial No. of unit) code if used with the PC or Web software
*22	Password	1234	Up to 6-digit password, enter to protect access to programming.
*24	Set time		HH MM SS It is set by pressing the number keys then # to confirm
*25	Set date		DD MM YY The date is set by pressing the number keys then # to confirm
*26	Hardware options	12 TOC 8 COP	1 = EN81-28 operating mode 2 = Service Input = Tech.2 4 = External microphone 8 = Consecutive dial mode 16 = Enable GSM module Any combination can be programmed. Enter the sum of the numbers
*27	Hardware monitoring	39	1 = PSU 2 = Battery supply 4 = Phone line, 8 = GSM No signal 16 = GSM Low signal 32 = Microphone/speaker test Any combination can be programmed. Enter the sum of the numbers.
*28	Extension number	0	Set an extension number 1-8 where units share a phone line.
*32	Answer delay	1	Set the number of rings the Memcom detects before it picks up
*42	Reassurance message	Std msg	1 = Play message 3 = Unlock/Lock Message 2 = Record message
*43	Guidance message	Std msg	1 = Play message 3 = Unlock/Lock Message 2 = Record message